

ALBA

inloom



1006



1011



2005



2036



3007



3005



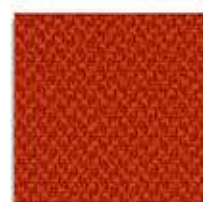
4030



4086



4004



4015



4027



4007



4022



4053



8033



8010



8003



7029



7013



7011



8078



7024



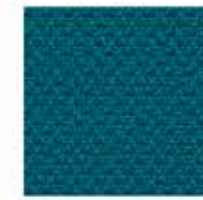
7041



7033



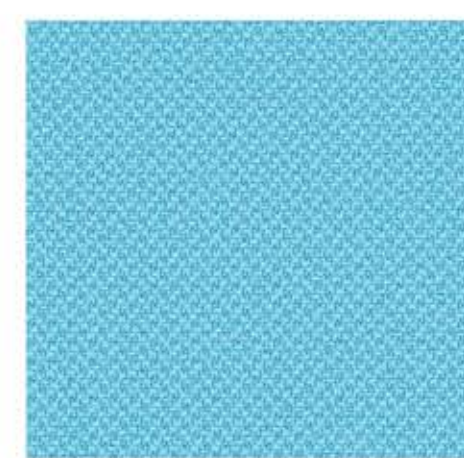
7026



6031



6007



6024



6098



6080



6071



6026



6005



5004



5015



5092

ALBA

Specification

SPECIFICATION	STANDARD	TOLERANCE	ACHEIVED
COMPOSITION	100% POLYESTER		
ENVIRONMENTAL	OEKO-TEX Standard 100		
ABRASION	ISO 12947-2 (Martindale)	± 10%	100,000
WIDTH (cm)	—	± 2%	140
WEIGHT (g/lm)	EN 12127	± 5%	450
PILLING (2000 rubs)	ISO 12945-2	from 4 to 5	5
LIGHT FASTNESS (blue scale)	ISO 105-B02 (Xoenotest)	from 5 to 8	6
FASTNESS TO RUBBING	ISO 105-X12 (Crockmeter)	from 4 to 5	4/5 (grey scale)

Slight colour variation within commercial tolerance may occur between batches due to properties of textiles

Digital fabric image may not be colour accurate. Always request fabric sample before ordering

FLAMMABILITY	
EN 1021-1&2 Cigarette & Match BS 7176 Low Hazard BS 5852 Ignition source/ Crib 5 BS 7176 Medium Hazard UNI 9175 Class 1 IM California TB117	Flammability performance is dependent upon the foam used

inloom
fabrics

CLEANING AND WASHING

